

CLINICAL PRESENTATION

70y.o female presents with chronic thigh pain.

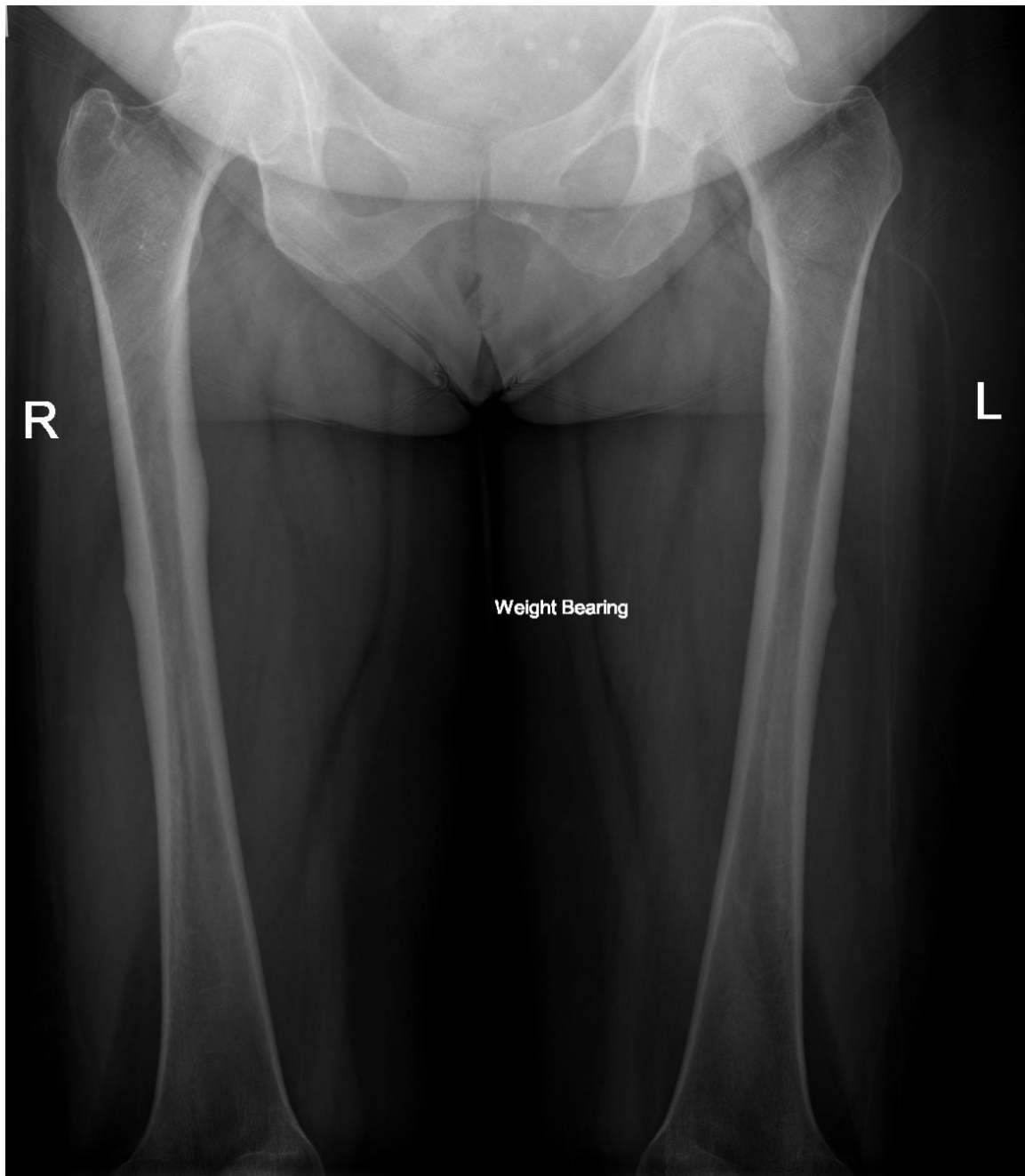
What are the findings on the X-ray?

What is the likely aetiology of this presentation?

What other imaging modality would assist in diagnosis?

IMAGES

WEIGHT-BEARING FEMORAL RADIOGRAPH



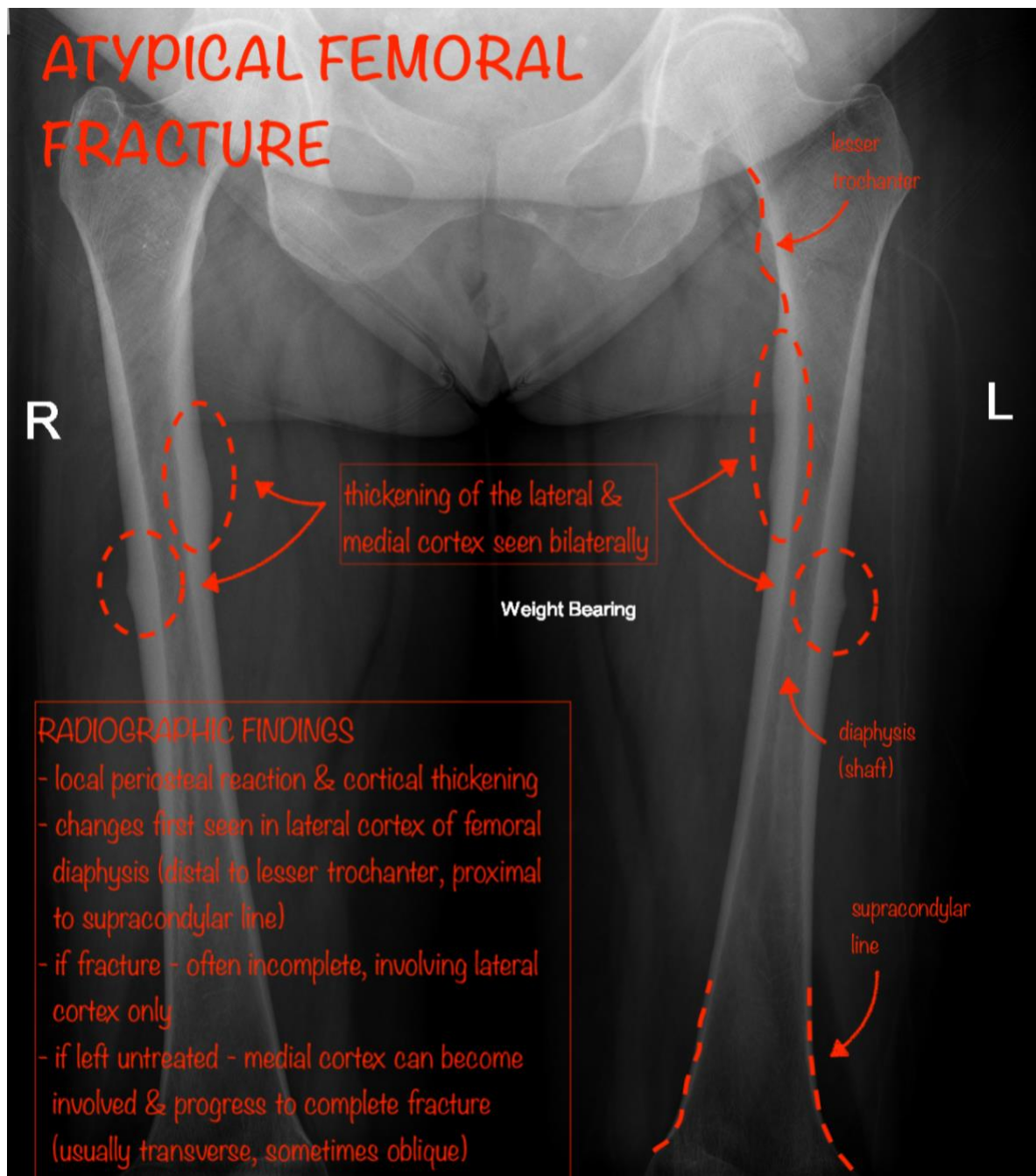
Case courtesy of Dr Henry Knipe

Radiopaedia.org <https://radiopaedia.org/>

From the case <https://radiopaedia.org/cases/50844> rID: 50844

ANNOTATED IMAGES – ATYPICAL FEMORAL FRACTURE

ANNOTATED WEIGHT-BEARING FEMORAL RADIOGRAPH



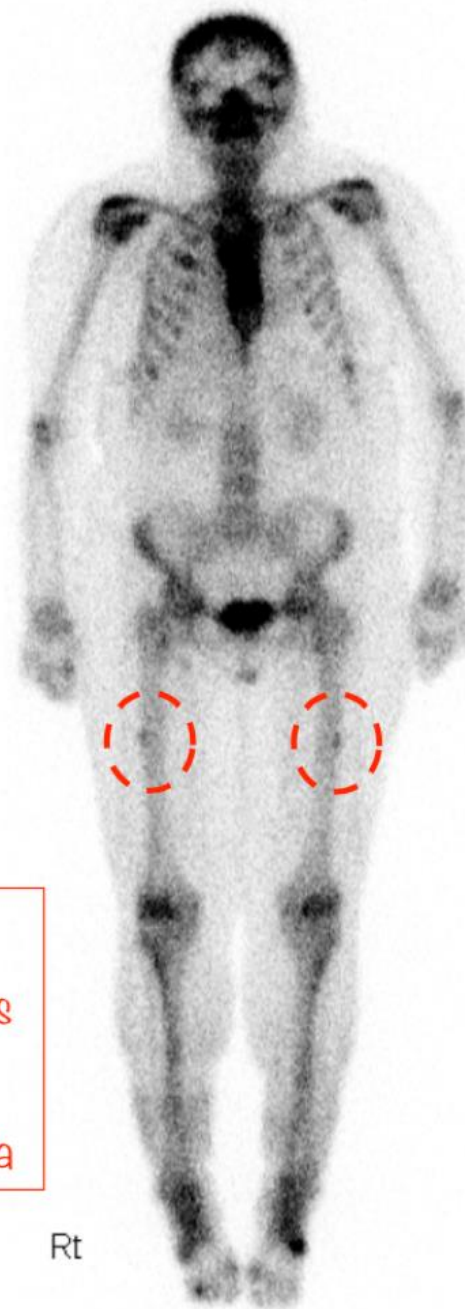
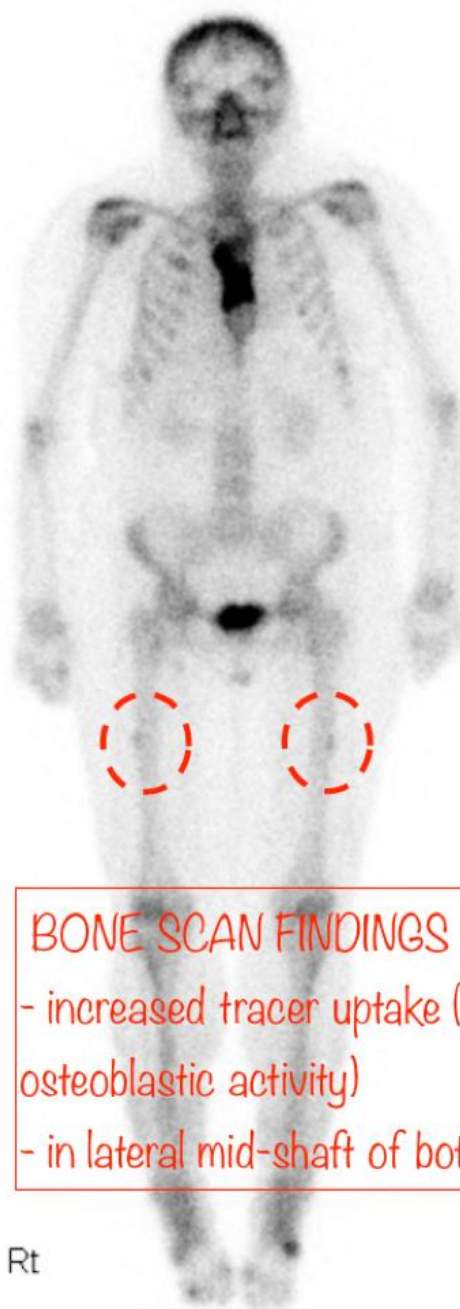
- Long-term (>5 years) bisphosphonate &/or RANKL inhibitor use may be associated with this pattern of injury.

Case courtesy of Dr Henry Knipe

Radiopaedia.org <https://radiopaedia.org/>

From the case <https://radiopaedia.org/cases/50844> rID: 50844

NUCLEAR MEDICINE – Tc-99m BONE SCAN

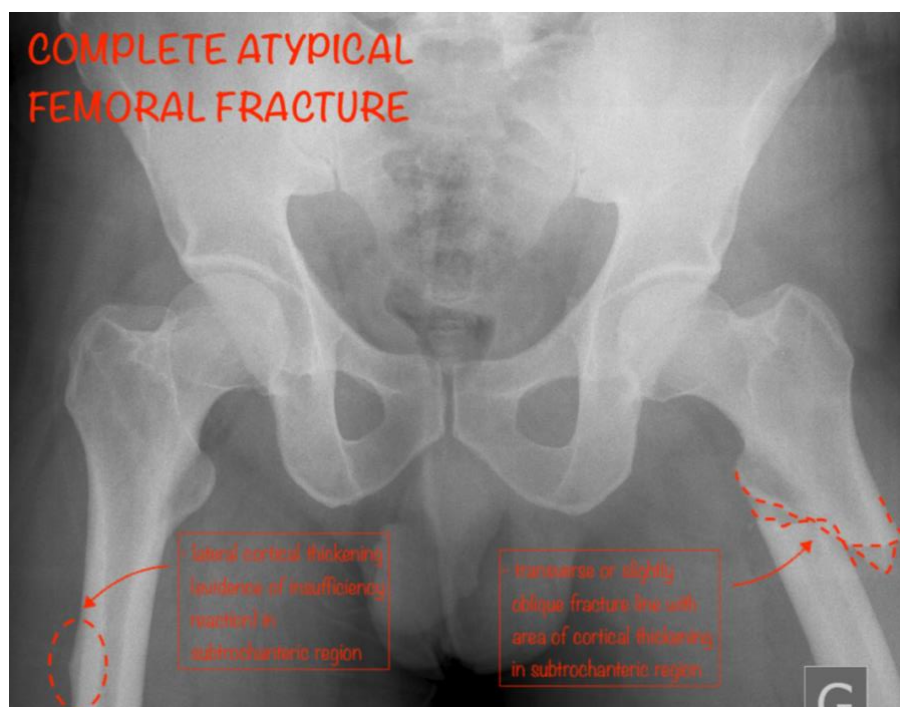


BONE SCAN FINDINGS

- increased tracer uptake (indicates osteoblastic activity)
- in lateral mid-shaft of both femora

Case courtesy of Dr Henry Knipe
Radiopaedia.org <https://radiopaedia.org/>
From the case <https://radiopaedia.org/cases/50844> rID: 50844

ANNOTATED PELVIS RADIOGRAPH



Case courtesy of Dr Benoudina Samir

Radiopaedia.org <https://radiopaedia.org/>

From the case <https://radiopaedia.org/cases/78169> rID: 78169

RESOURCES

<https://radiopaedia.org/articles/atypical-femoral-fracture-1?lang=gb>

<https://oxfordmedicine->

<com.ezp.lib.unimelb.edu.au/view/10.1093/med/9780199216369.001.0001/med-9780199216369-chapter-0020#med-9780199216369-div1-026011>

https://www.dynamed-com.ezp.lib.unimelb.edu.au/management/bisphosphonates-for-treatment-and-prevention-of-osteoporosis#ATYPICAL_FEMUR_FRACTURE