

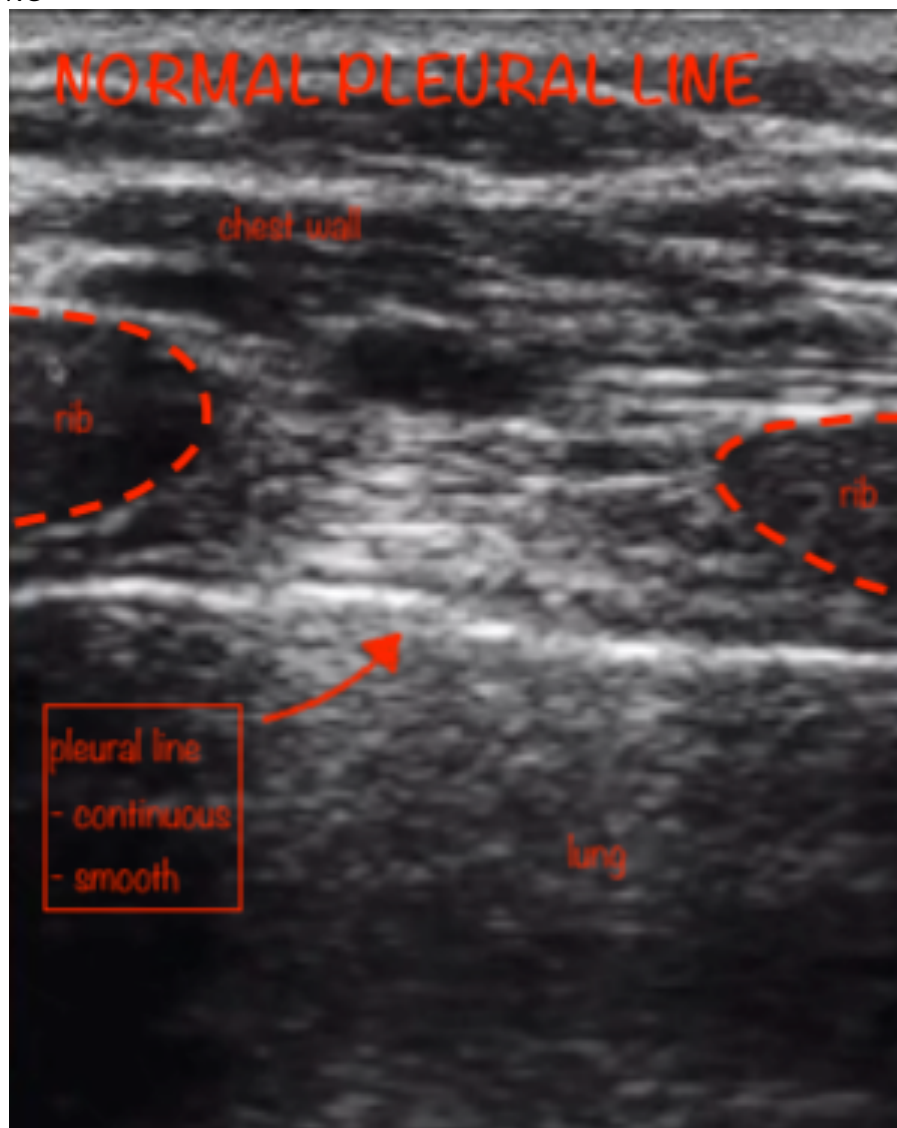
COVID-19

COMMON POCUS FINDINGS

- B-lines – variety of patterns including focal, multifocal & confluent
- Irregular, thickened pleural line with scattered discontinuities
- Subpleural consolidation
- Alveolar consolidation
- Restitution of normal lung with recovery – reappearance of A-lines
- Distribution – often bilateral & postero-basal

IMAGES

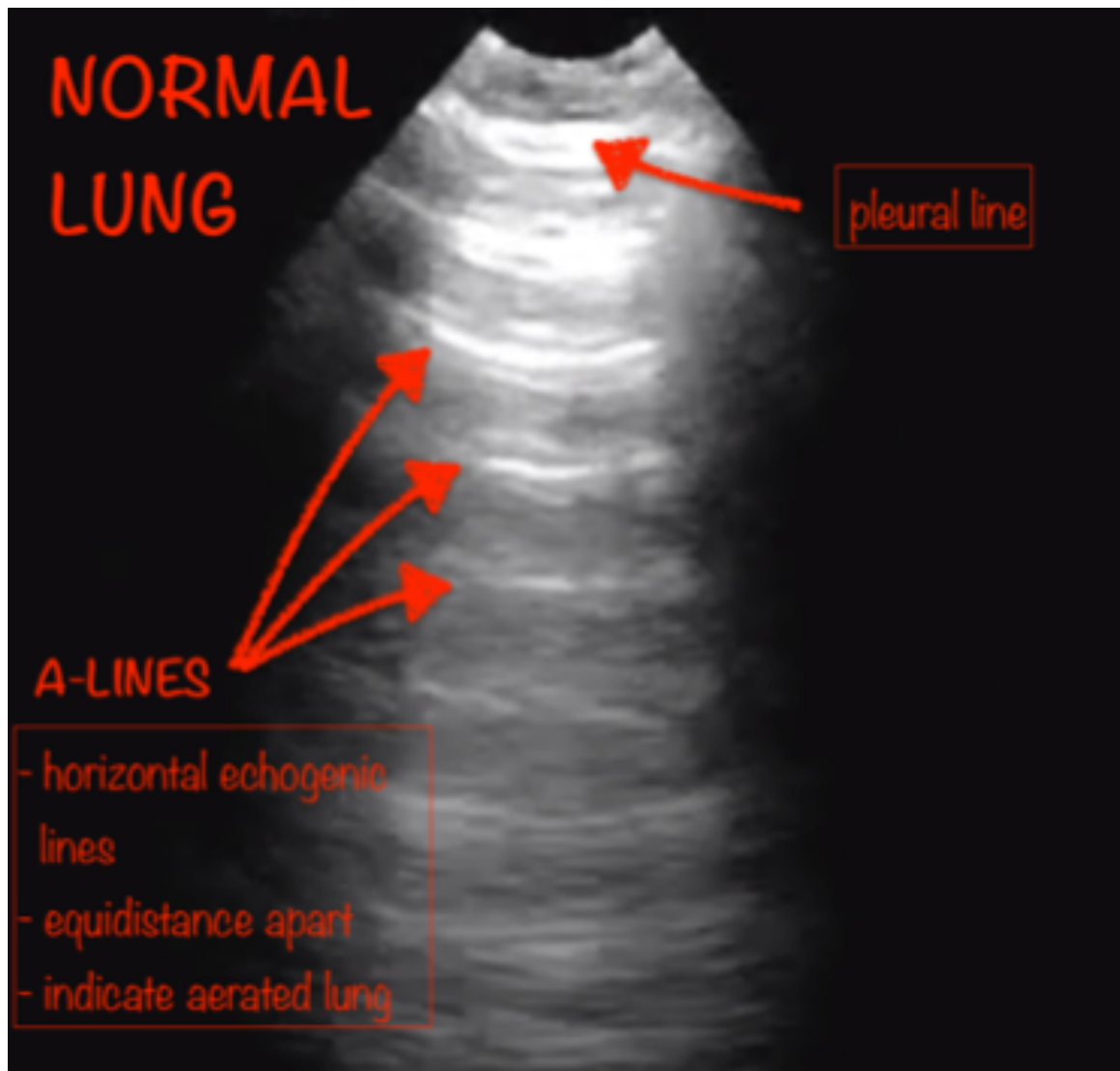
NORMAL LUNG



◆◆◆ CORE
ULTRASOUND

Case courtesy of Core Ultrasound <https://www.coreultrasound.com/>

From Pneumothorax 5 minute sono <https://www.coreultrasound.com/pneumothorax/>

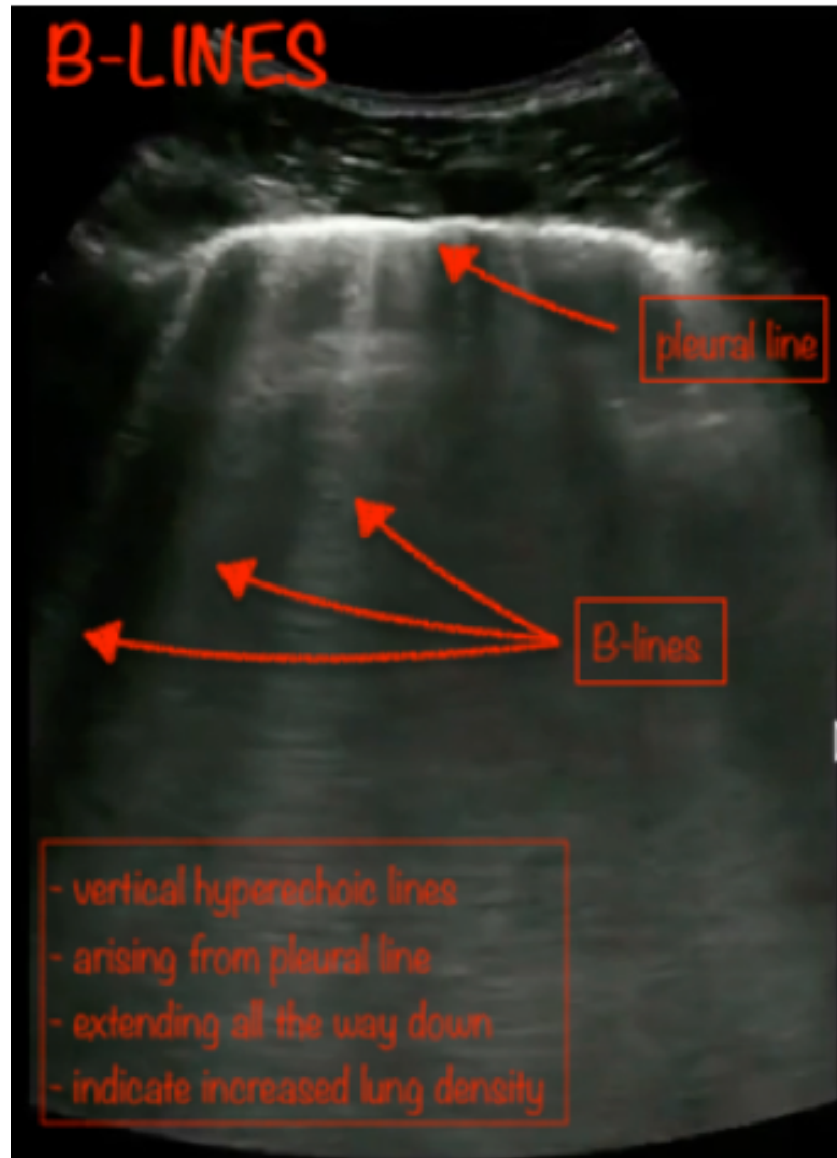


Case courtesy of Dr David Carroll

Radiopaedia.org <https://radiopaedia.org/>

From the case <https://radiopaedia.org/cases/61382> rID: 61382

B-LINES



◆◆◆ CORE
ULTRASOUND

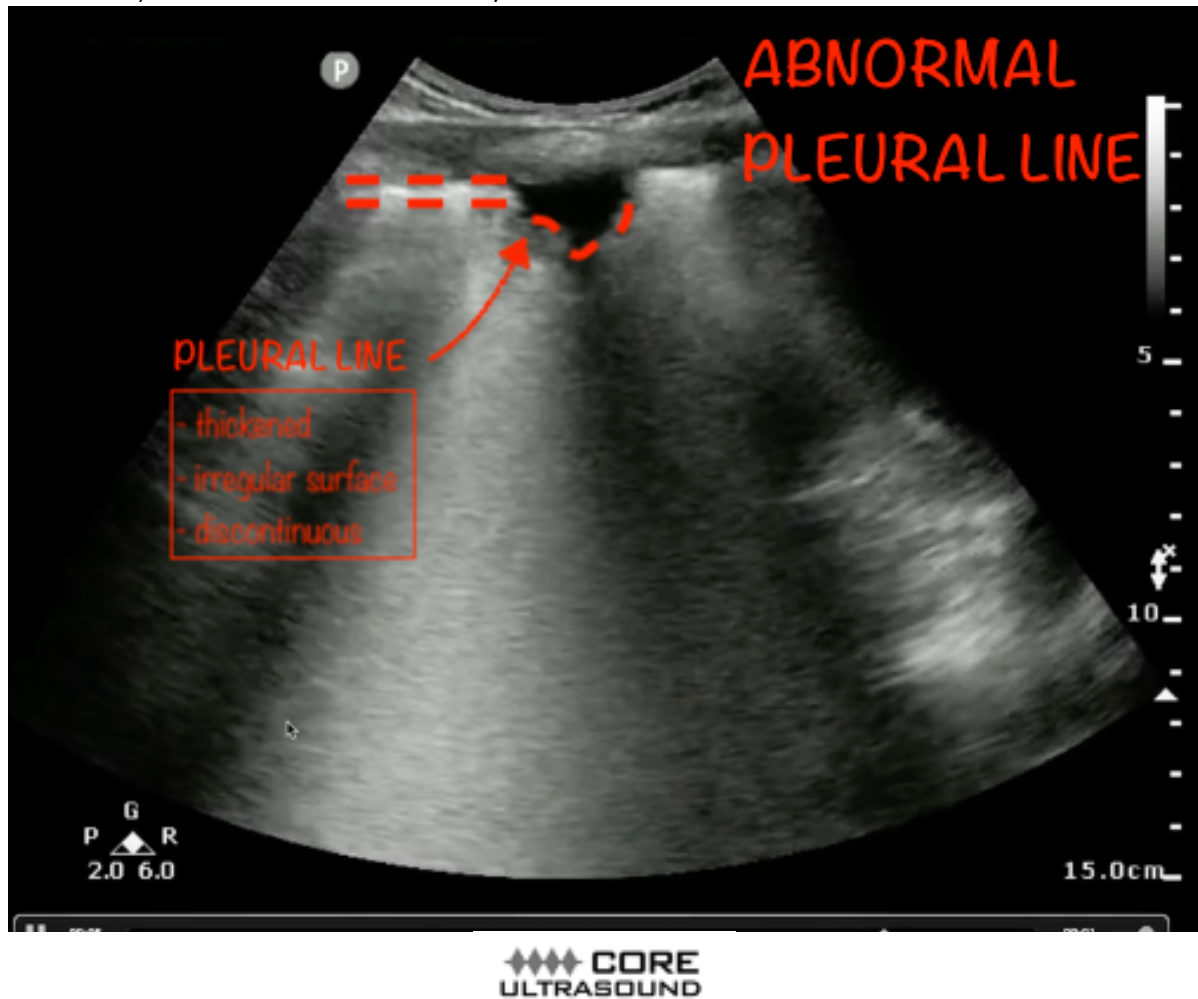
Differential diagnosis of B-lines – increased density:

- Focal – pneumonia, atelectasis, contusion
- Diffuse – pulmonary oedema, ARDS, ILD, acute chest syndrome, pre-eclampsia

Case courtesy of Core Ultrasound <https://www.coreultrasound.com/>

From B-lines 5 minute sono <https://www.coreultrasound.com/b-lines/>

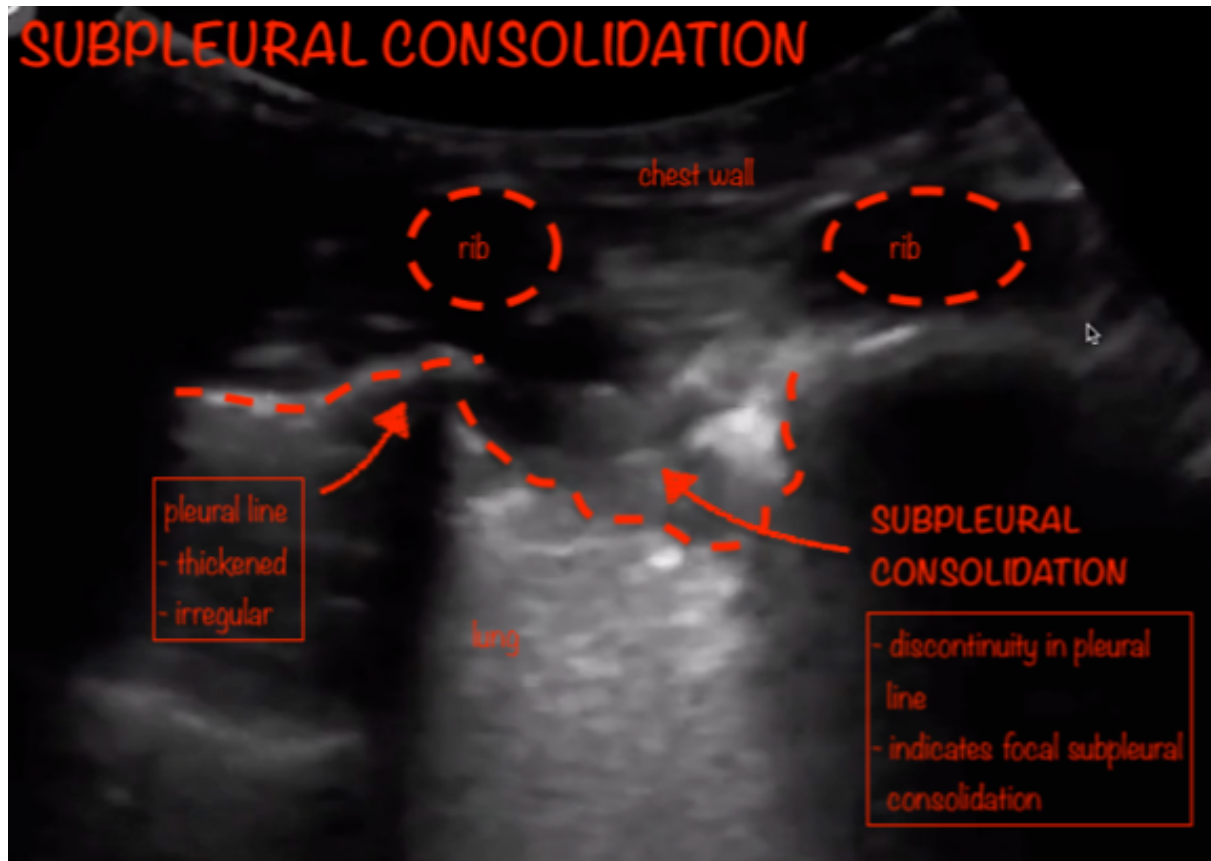
IRREGULAR, THICKENED PLEURAL LINE W/ SCATTERED DISCONTINUITIES



Case courtesy of Core Ultrasound <https://www.coreultrasound.com/>

From Viral pneumonia 5 minute sono <https://www.coreultrasound.com/viralpna/>

SUBPLEURAL CONSOLIDATION

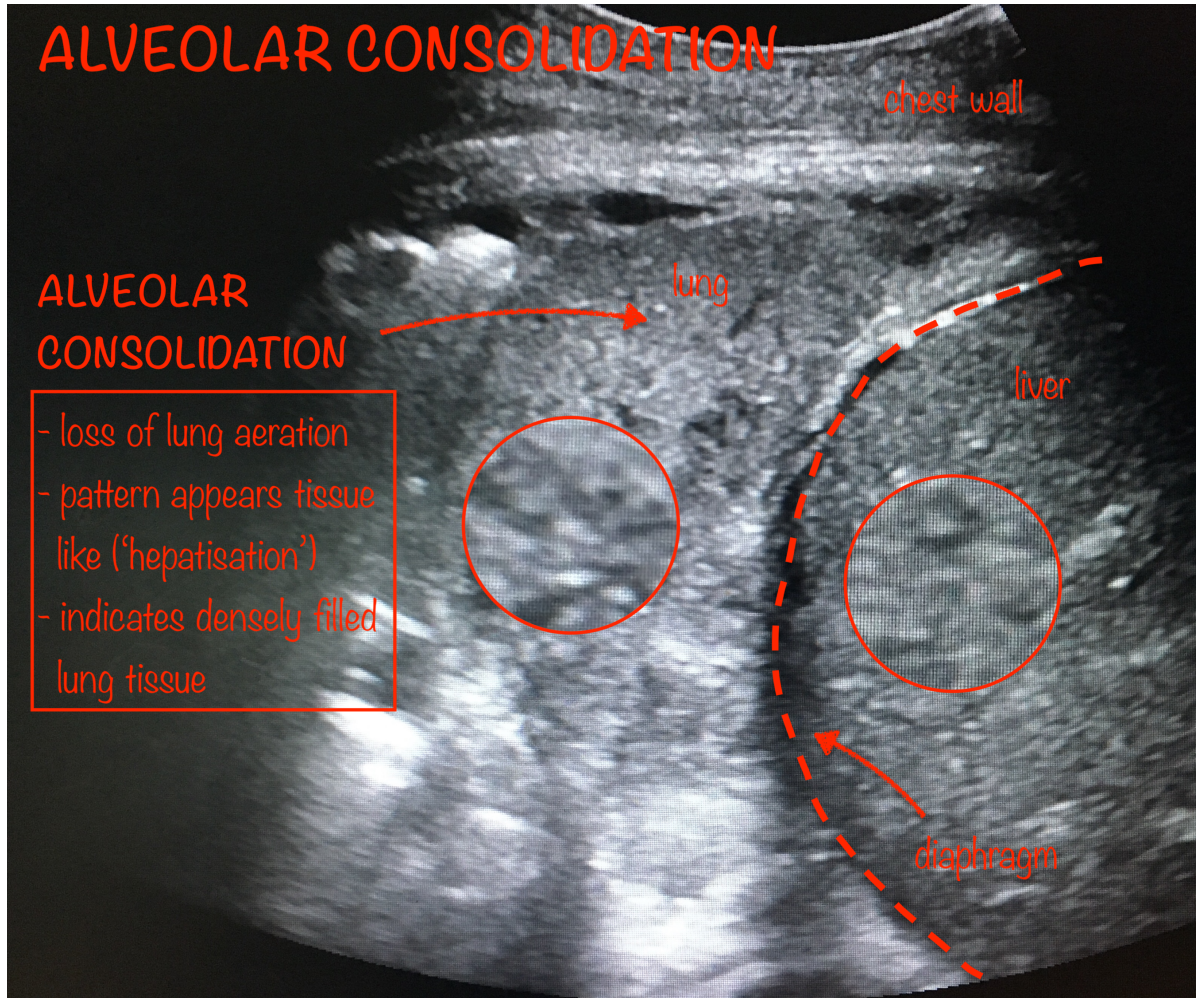


◆◆◆ CORE
ULTRASOUND

Case courtesy of Core Ultrasound <https://www.coreultrasound.com/>

From Pulmonary contusions 5 minute sono <https://www.coreultrasound.com/pulmonary-contusions/>

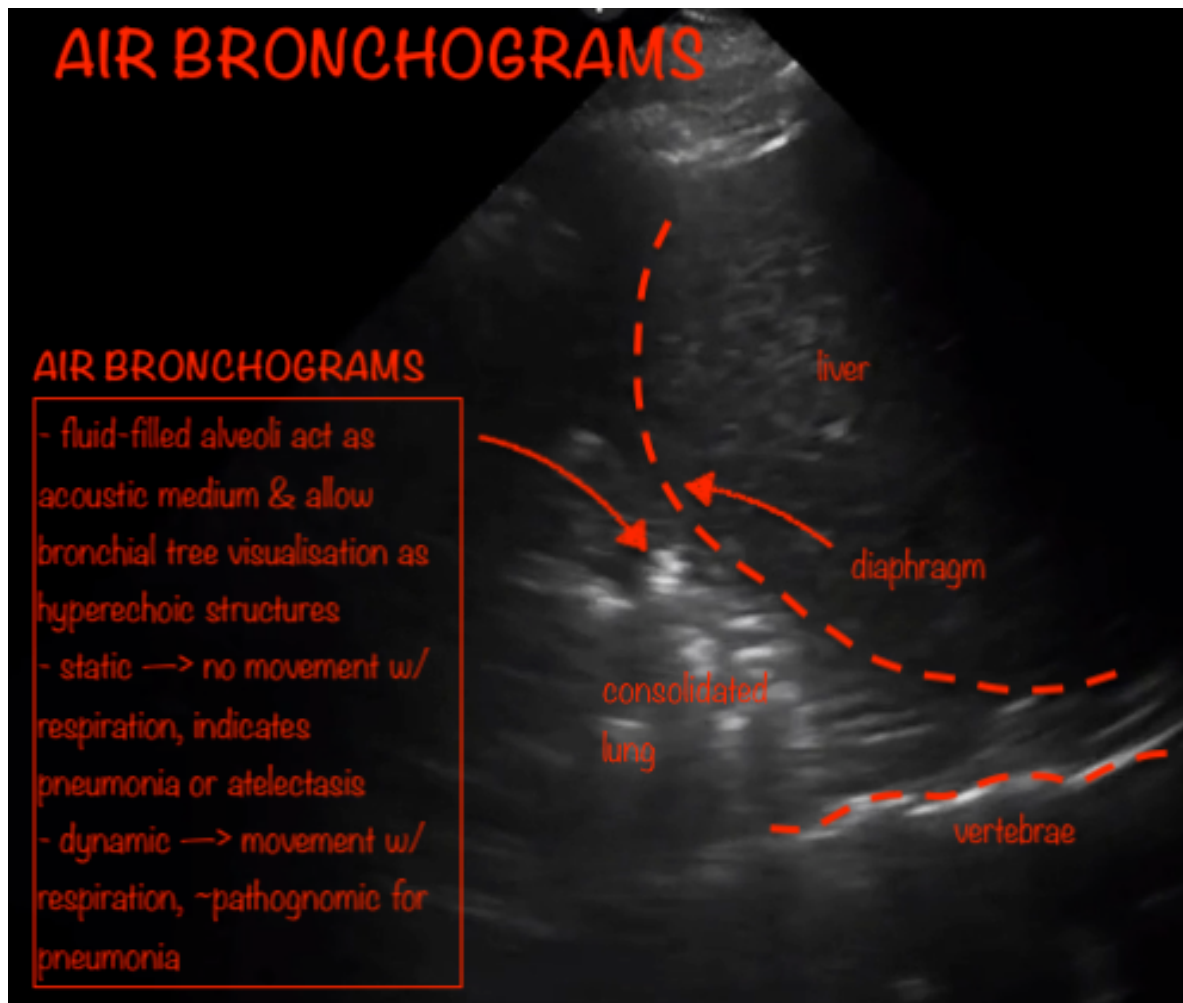
ALVEOLAR CONSOLIDATION



Case courtesy of Dr Ian Bickle

Radiopaedia.org <https://radiopaedia.org/>

From the case <https://radiopaedia.org/cases/59328> rID: 59328



Case courtesy of Core Ultrasound <https://www.coreultrasound.com/>
 From Pneumonia 5 minute sono <https://www.coreultrasound.com/pneumonia/>

REFERENCES

- <https://www.coreultrasound.com/5ms-lung/>
- <https://radiopaedia.org/articles/covid-19-3?lang=gb>
- <https://radiopaedia.org/articles/air-bronchogram?lang=gb>
- <https://radiopaedia.org/articles/a-line-ultrasound?lang=gb>
- <https://radiopaedia.org/articles/b-line-ultrasound?lang=gb>
- <https://annalsofintensivecare.springeropen.com/articles/10.1186/2110-5820-4-1>
- <https://link.springer.com/article/10.1007/s00134-020-05996-6#Sec2>
 - Peng, Q., Wang, X. & Zhang, L. Findings of lung ultrasonography of novel corona virus pneumonia during the 2019–2020 epidemic. Intensive Care Med (2020). <https://doi.org/10.1007/s00134-020-05996-6>
- https://papers.ssrn.com/sol3/papers.cfm?abstract_id=3544750
 - Huang, Yi and Wang, Sihan and Liu, Yue and Zhang, Yaohui and Zheng, Chuyun and Zheng, Yu and Zhang, Chaoyang and Min, Weili and Zhou, Huihui and Yu, Ming and Hu, Mingjun, A Preliminary Study on the Ultrasonic Manifestations of Peripulmonary Lesions of Non-Critical Novel Coronavirus Pneumonia (COVID-19) (February 26, 2020). Available at SSRN: <https://ssrn.com/abstract=3544750> or <http://dx.doi.org/10.2139/ssrn.3544750>